

## How is Tracktherace set up for your event?

- 1 The entire race view is set up on the platform before the event begins, including track, elevation graph, waypoints, race maps, etc.
- 2 Participants' names are imported (if registrations have not yet been completed)
- 3 Each participant will be provided with one of our devices:
  - They will be sent by post before the event
  - They will be shared among the participants
  - Once they are turned on, the participant's marker will appear on the map



### Tracktherace device

Last GPS & GPRS technologies

It works with all phone network operators

Memory buffer for zones without coverage

60 gr. / 7 x 4 x 2 cm

140 hours of autonomy for a 5 min. report/ 90 hours for 1 minute

SOS button



PROXECTO COFINANCIADO POR IGAPE, XUNTA DE GALICIA E FONDO EUROPEO DE DESENVOLVEMENTO REXIONAL DO PROGRAMA OPERATIVO 2014-2020



Fondo Europeo de Desenvolvemento Rexional  
«Unha maneira de facer Europa»



## Contact

Using Tracktherace in your event is very easy.  
Contact us and we will study the best way to help you.

- [tracktherace.com](http://tracktherace.com)
- +34 604 008 810
- [sales@tracktherace.com](mailto:sales@tracktherace.com)
- [facebook.com/tracktherace](https://facebook.com/tracktherace)



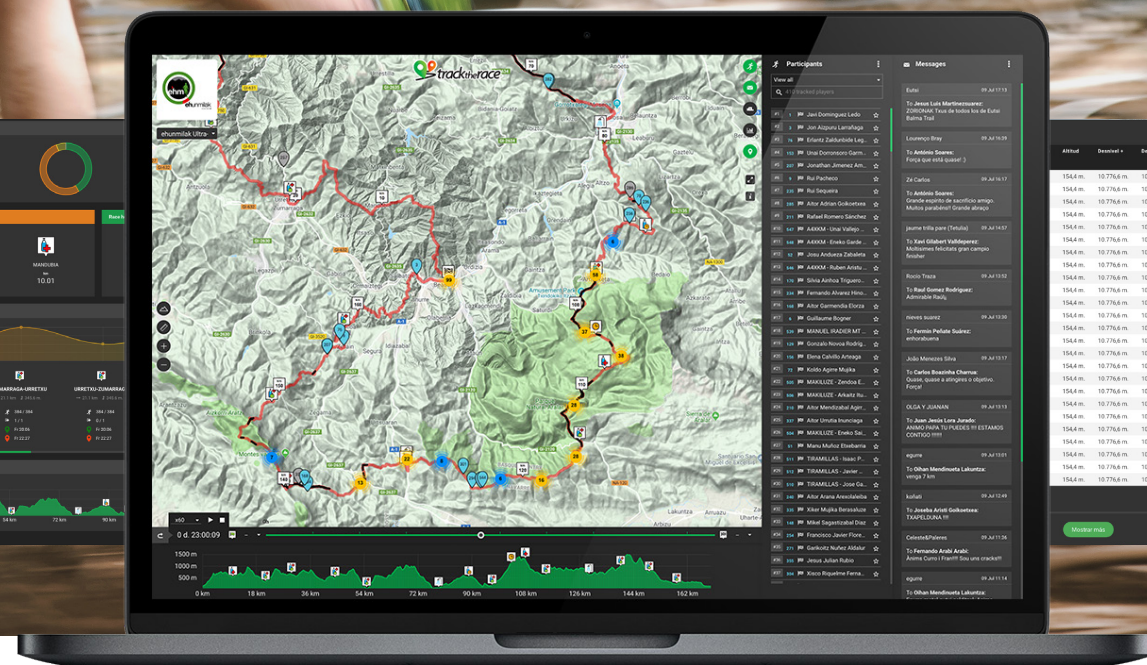
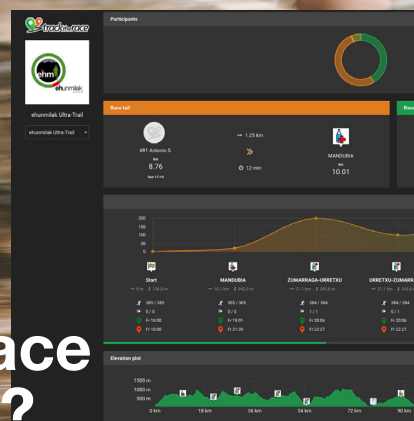
## Tracking GPS for sports

[tracktherace.com](http://tracktherace.com)





# How will Tracktherace improve your event?



## Safety and race control

- Real-time tracking and running route for each participant
- Equipment and organization vehicles geolocation
- Race status alerts (participant out of route, without movement...)
- Management of participants in race (dropouts, absences...)
- Passthrough times for each configured control point
- Estimated arrival time to the next control point
- Participants' location with link to *Google Maps* to start navigation
- Graphs showing the distribution of the participants along the route
- Specific information on the head and tail of the race

## Spread your event online

- Race course and altimetry chart
- Classification and real-time tracking
- Visibility of sponsors in the map view
- Statistics of each participant (speed, time, accumulated altitude...)
- Statistics of each control point (participants that have passed, pending, dropouts...)
- Messaging wall for the public
- Announcements publication by the organization
- Filtering of participants by favorites, categories...
- Race replay
- Comparison of times among participants in a race segment
- Different background maps, distance meter...

## More services ...

- Website for your event
- Registrations management with full configuration (dynamic prices, adaptable form...)
- Payment gateway
- Mailing participants
- APIs for consumption of information generated on the platform